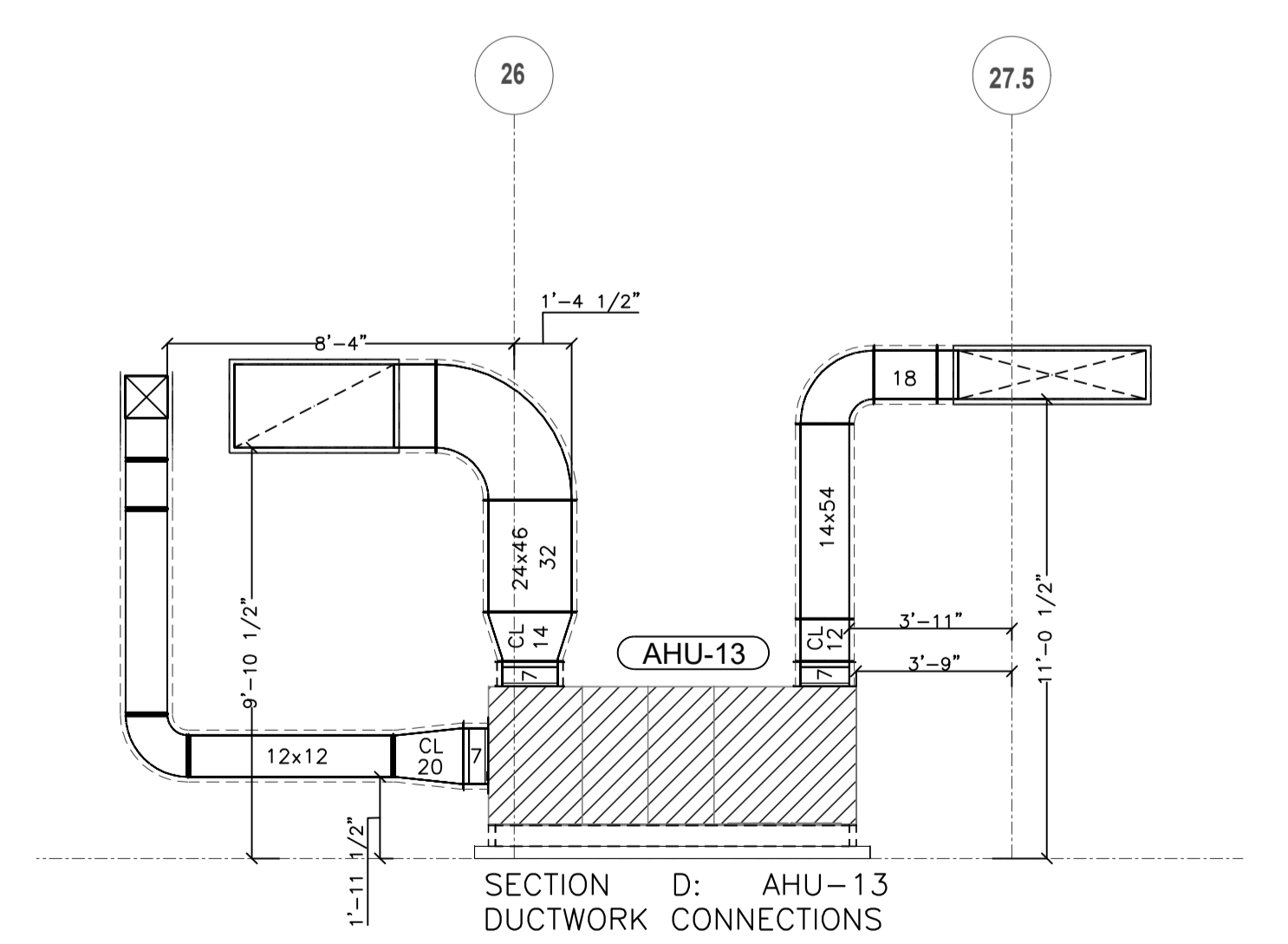
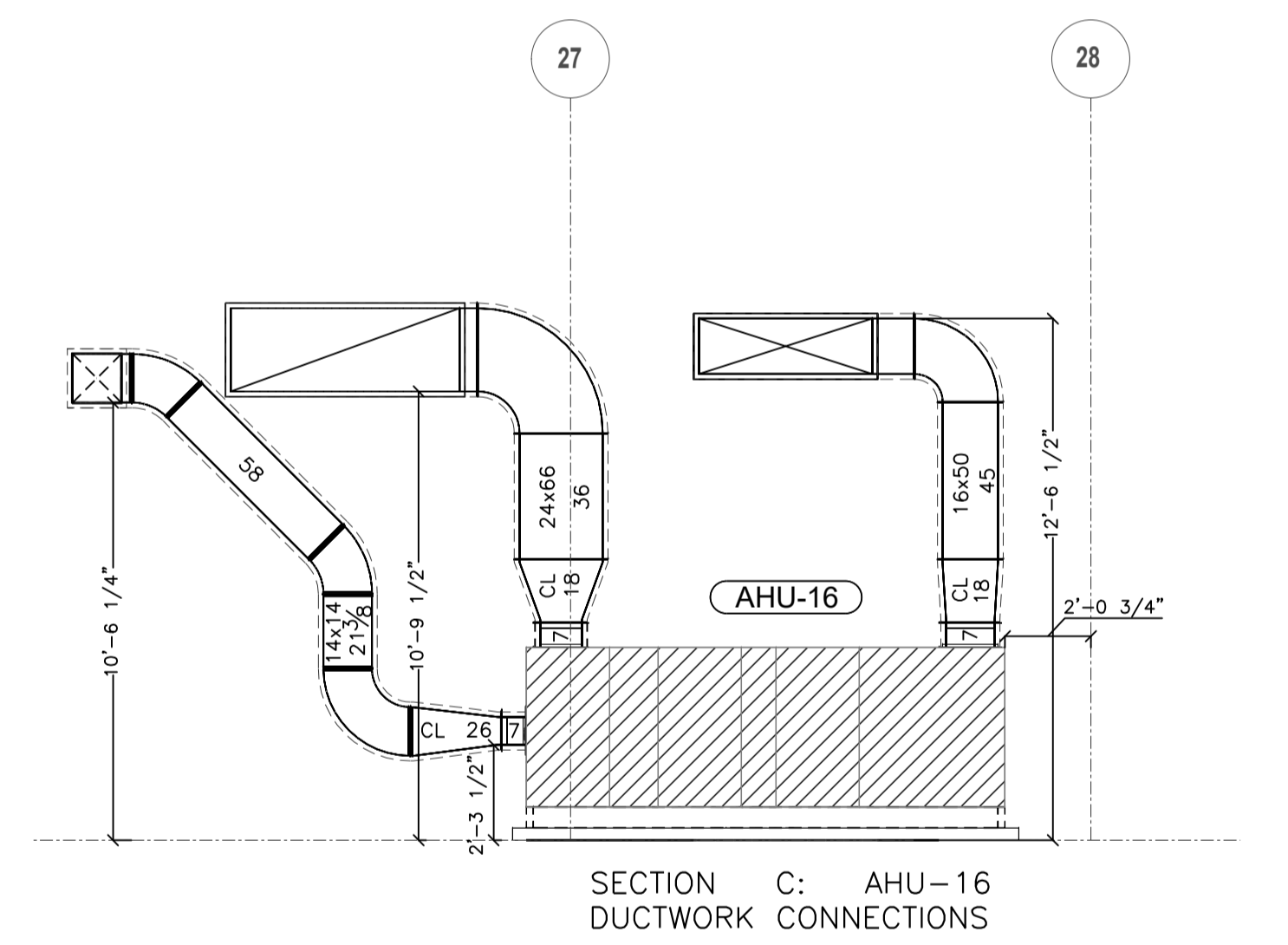
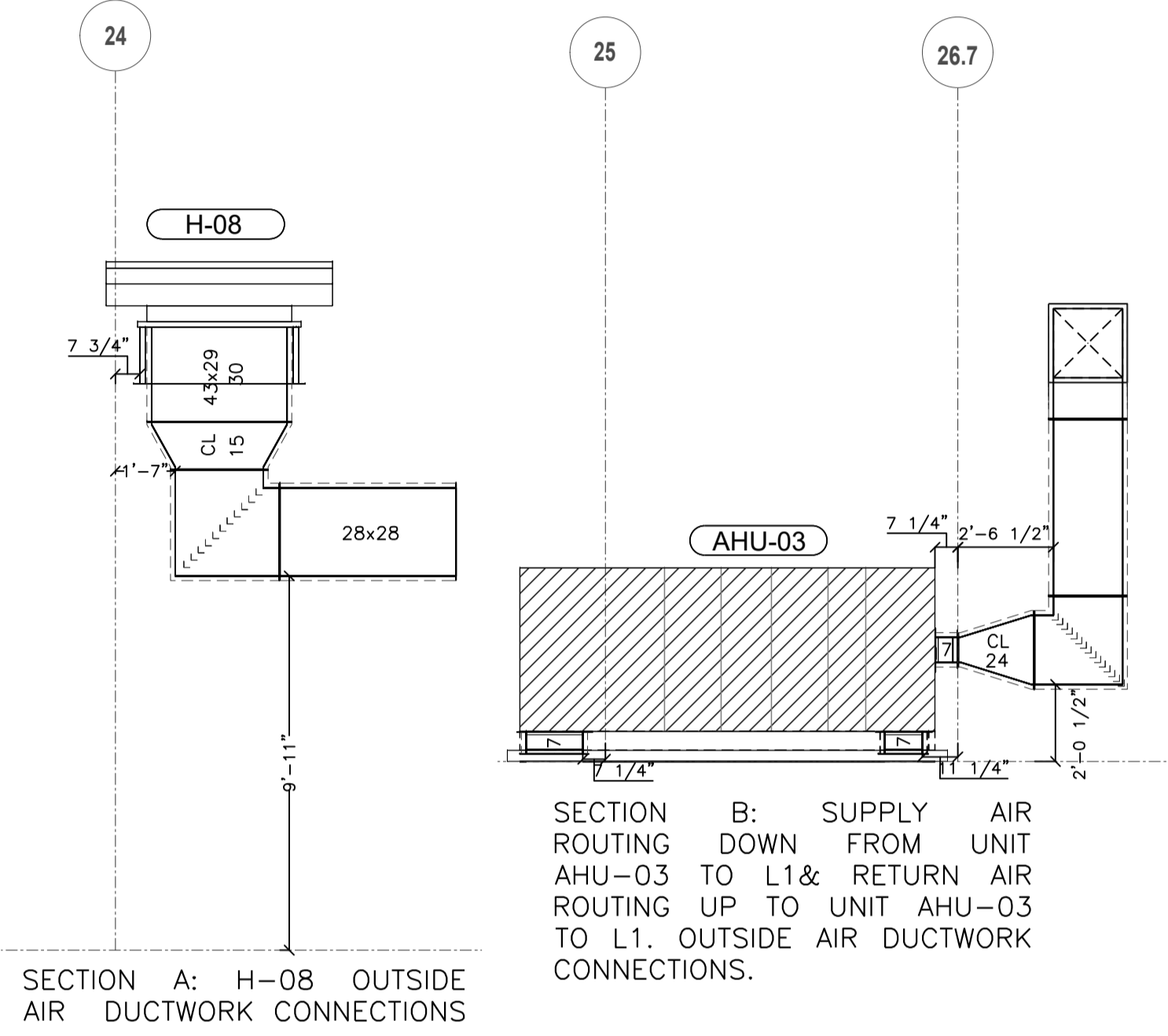
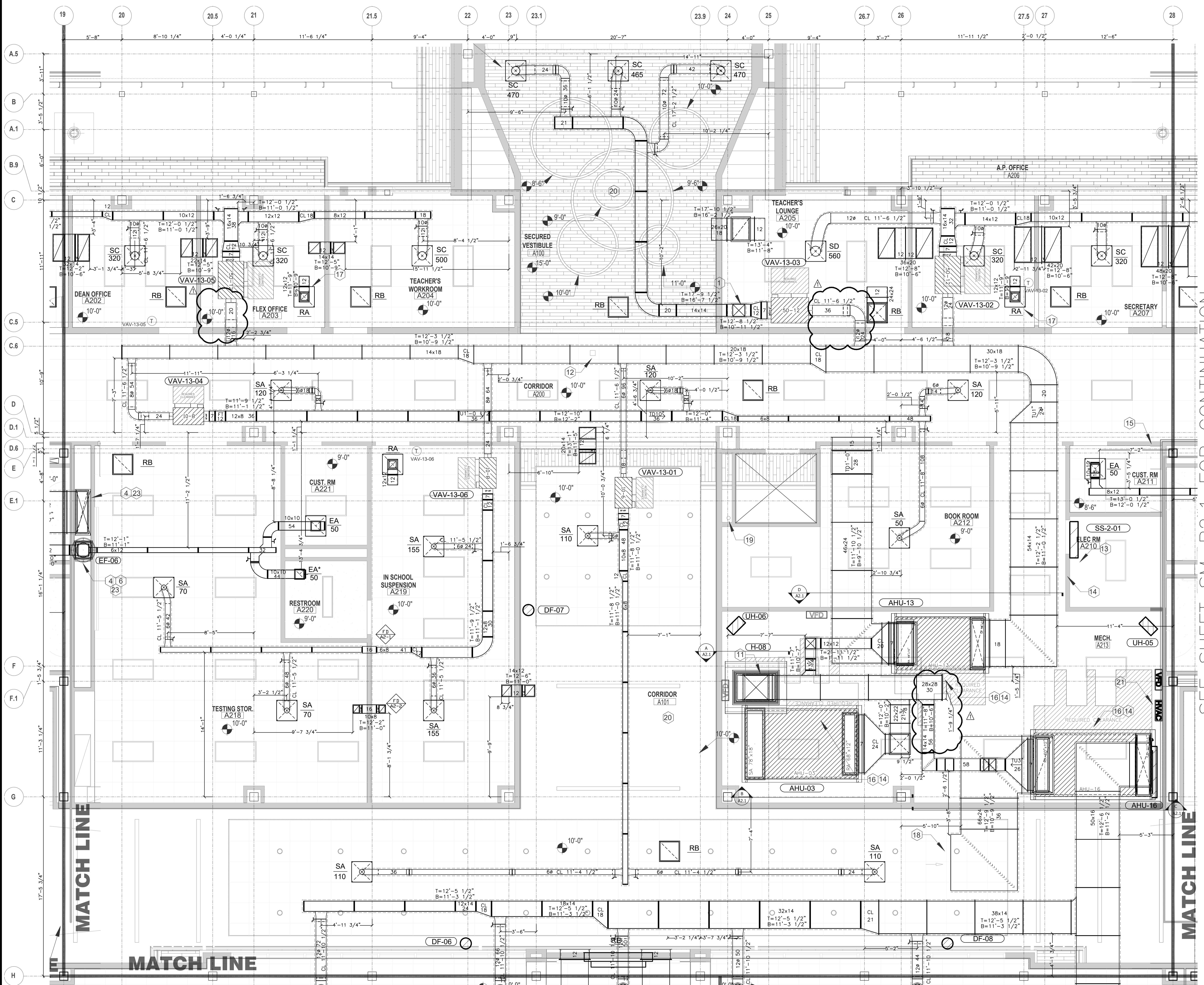
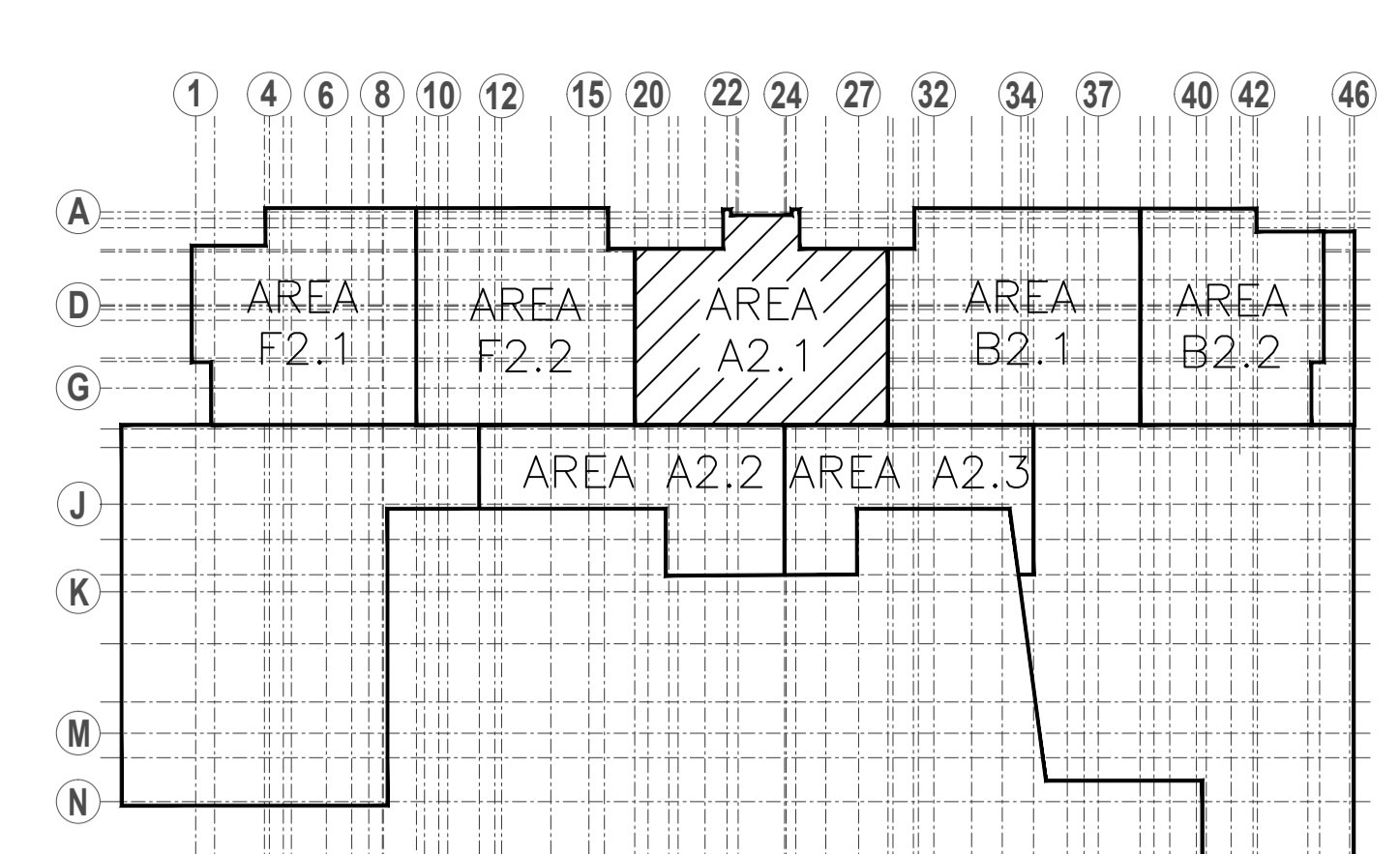


- MECHANICAL KEYED NOTES:**
- 1 ROUTE SUPPLY DUCT UP TO ACCESS ABOVE-CEILING SPACE IN SECURED VESTIBULE A100.
 - 2 PROVIDE REMOTE CABLE-OPERATED DAMPER. REFER TO DETAIL.
 - 3 TAP 20"x16" DUCT OFF BOTTOM OF SUPPLY MAIN AND ROUTE DOWN IN CHASE TO LEVEL BELOW. REFER TO 1ST LEVEL - AREA A FOR CONTINUATION.
 - 4 ROUTE DUCT DOWN IN CHASE TO FLOOR BELOW. REFER TO 1ST LEVEL - AREA A FOR CONTINUATION.
 - 5 TRANSFER DUCT. REFER TO DETAIL. COORDINATE WITH STRUCTURAL. (TYPICAL)
 - 6 ROUTE DUCT UP TO EXHAUST FAN ON ROOF. TRANSITION TO FULL SIZE OF FAN OPENING IN VERTICAL. REFER TO ROOF PLAN FOR FAN LOCATION.
 - 7 TAP 20"x12" DUCT OFF BOTTOM OF RETURN MAIN AND ROUTE DOWN IN CHASE TO LEVEL BELOW. REFER TO 1ST LEVEL - AREA A FOR CONTINUATION.
 - 8 TAP 14"x14" DUCT OFF BOTTOM OF SUPPLY MAIN AND ROUTE DOWN IN CHASE TO LEVEL BELOW. REFER TO 1ST LEVEL - AREA A FOR CONTINUATION.

- 9 ROUTE DUCT THROUGH WEBBED STRUCTURAL ELEMENTS. COORDINATE WITH STRUCTURAL.
- 10 PROVIDE SOUND ATTENUATOR IN TRANSFER DUCT. ROUTE DUCT TO SHEET METAL PLENUM FULL SIZE OF AIR DEVICE INLET BY 12" DEEP INSULATE BACKSIDE OF PLENUM.
- 11 ROUTE DUCT UP TO HOOD ON ROOF ABOVE. TRANSITION TO FULL SIZE OF HOOD OPENING IN VERTICAL. REFER TO ROOF PLAN FOR HOOD LOCATION.
- 12 PROVIDE DUCT STATIC PRESSURE SENSOR AT LOCATION INDICATED. REFER TO CONTROLS.
- 13 RS / RL SHOWN AS SINGLE LINE FOR CLARITY. ROUTE PIPE UP, THROUGH ROOF, TO ASSOCIATED OUTDOOR UNIT. REFER TO ROOF PLAN FOR CONTINUATION.
- 14 ROUTE INSULATED COPPER CONDENSATE, FULL SIZE OF UNIT CONNECTION, TRAPPED PER DETAIL, AS SHOWN.
- 15 ROUTE CONDENSATE DOWN FACE OF WALL AND TERMINATE AT MOP SINK 1" ABOVE FLOOD RIM.
- 16 ROUTE CONDENSATE TO NEAREST FLOOR DRAIN. COORDINATE WITH PLUMBING FOR EXACT LOCATION.

- 17 RETURN AIR TRANSFER BOOT. REFER TO DETAIL. (TYPICAL)
- 18 COVER OPENING WITH GALVANIZED EXPANDED METAL.
- 19 ROUTE REFRIGERANT UP FROM 1ST LEVEL TO ROOF ABOVE. REFER TO 1ST LEVEL PLANS AND ROOF PLAN FOR CONTINUATION.
- 20 REFER TO 1ST LEVEL PLANS FOR THERMOSTAT LOCATION IN THIS AREA.
- 21 CONTROLS CONTRACTOR TO VERIFY SIZE AND QUANTITY OF HVAC CONTROL PANELS.
- 22 ROUTE CONDENSATE DOWN IN WALL AND CONNECT TO SINK TAILPIECE.
- 23 PROVIDE COMBINATION SMOKE / FIRE DAMPER IN FLOOR AT DUCT PENETRATION.



SEE SHEET SM-B2.1 FOR CONTINUATION

SEE SHEET SM-A2.2 FOR CONTINUATION

SEE SHEET SM-A2.3 FOR CONTINUATION

FIRE DAMPER SCHEDULE

TYPE	MARK	DUCT SIZE	MOUNT	SLV.	LEN.	CONNECT.	K-DM	ACC.	DOOR	DETAIL
DFD-100	A1.1	60x	VERT. <td>10"</td> <td></td> <td></td> <td></td> <td></td> <td></td> <td>DFD-100</td>	10"						DFD-100
DFD-100	A1.2	80x	VERT. <td>10"</td> <td></td> <td></td> <td></td> <td></td> <td></td> <td>DFD-100</td>	10"						DFD-100